



IOSH Managing Occupational Health and Wellbeing



ABOUT THE IOSH CERTIFIED ELEARNING SUITE

At International Workplace we know that the best way to achieve safety and health training success is to get people fully involved with tailored content and learning by doing. We want to get learners really thinking about what they're learning – and having the confidence and enthusiasm to put it into practice when they're back at work – so that everyone notices the difference.

International Workplace's IOSH Certified eLearning courses are unlike any other group of courses. You'll find a set of practical programmes, full of step-by-step guidance, and a sharp business focus. Not only that, you'll also find the highly innovative format and content engages and inspires your staff – critical to getting safety and health embedded across the whole organisation.

HOW DOES YOUR BUSINESS BENEFIT?

- ✓ **Practical advice and tools** for managers to help create a healthy and productive place of work.
- ✓ **Flexibility** – the programme can be delivered flexibly so that it suits your business
- ✓ **Improve awareness** of health and wellbeing across the organisation
- ✓ **Greater productivity** – as fewer hours are lost due to ill health and reduced presenteeism.
- ✓ **A consistent training experience**, delivered from within your own learning portal or Learning Management System (LMS)

Memorable and thought-provoking facts and case studies help drive the points home over the whole course. Each module is backed by crystal-clear examples and recognisable scenarios, and summaries reinforce the key learning points.

International Workplace provides online tutor support where needed, helping to ensure a stress-free eLearning experience throughout. We even handle the assessment marking, liaison with IOSH and despatch of the certificates. All of it included in the price.

I am delighted with the IOSH Training Course developed by International Workplace to sit within our very own LMS, giving us the flexibility and comfort for our people being able to study within the workplace and at their own pace. The course was easily integrated into our system and the service received from our Account Manager was impeccable.

Jane Callan, Health & Safety Manager
Facilities. DWF LLP

IOSH MANAGING OCCUPATIONAL HEALTH AND WELLBEING

IOSH Managing Occupational Health and Wellbeing is for managers and supervisors working in any sector and for any organisation. It's designed to provide them with the tools and techniques to improve health and wellbeing across their organisation. They won't suddenly become health and wellbeing experts – but it will help them to become line managers who truly care about the health and wellbeing of an organisation's most important asset – its people.

On completion of the course and submission of the final assessment project, successful delegates are awarded an IOSH Managing Occupational Health and Wellbeing certificate. Learners also get a completion certificate immediately available for download from the course pending the IOSH verification process.

IOSH MANAGING OCCUPATIONAL HEALTH AND WELLBEING COURSE OUTLINE

- A healthy company: understand how to manage the health and wellbeing of workers and have more effective discussions regarding their health needs.
- Health risk management: explore what health management is and why it makes good business sense to manage occupational health and wellbeing in the workplace.
- Fitness for work: understand non-related physical and mental health conditions and how this impacts employees' fitness for work.
- Wellbeing: How wellbeing adds value to the organisation and how to promote healthy lifestyles and positive mental health to enable a healthy workplace culture.

BENEFITS FOR DELEGATES

- Manage health risks.
- Understand your own responsibilities for health and wellbeing and why it makes good business sense.
- Manage fluctuations in people's health status and assess fitness for work.
- Measure your own performance.
- Reflect on good practice, both personally and organisation-wide.

COSTS

Price per learner is dependent on the number of learners you have. The more you book in one go, the lower the cost per learner.

Learners booked	Cost per user
1 to 9	£149.00
10 to 49	£134.00
50 to 99	£126.00
100 to 499	£119.00
500 +	POA



KEY FEATURES OF THE IOSH CERTIFIED ELEARNING SUITE



Highly engaging
interactive exercises
designed to be
responsive for the best
learning experience.

Interactive workbooks that auto populate with key learning takeaways as your learners progress through the courses. The workbook allows learners to add notes and capture screengrabs for reference, building a complete record of their study journey.



The latest IOSH syllabuses are delivered in a highly interactive format for eLearning on any device, allowing learners to study at their own pace, working remotely or from office locations.



Online assessment
submission, so no need
to attend an exam.



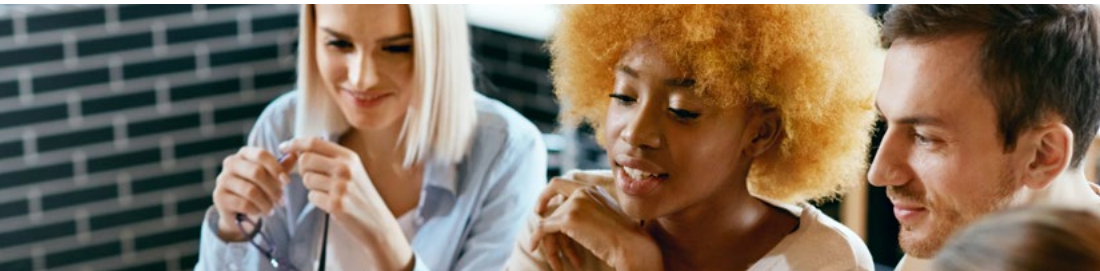
We will continue to support your learners until they pass the course with no extra cost or hidden fees.

WHAT COURSES MAKE UP THE IOSH CERTIFIED ELEARNING SUITE?

The IOSH Certified eLearning suite is made up of five individual courses designed for a specific audience within your organisation. They aim to improve company-wide safety culture from the top down as well as increasing productivity from fewer hours lost due to sickness and accidents.

- IOSH Working Safely
- IOSH Managing Safely
- IOSH Managing Safely Refresher
- IOSH Managing Occupational Health and Wellbeing
- IOSH Safety for Executives and Directors

With training available and tailored to the needs and responsibilities of each level of employee, the courses will promote active staff involvement to improve the workplace as well as the added benefit of an enhanced reputation within your supply chain.



“I have had some excellent feedback from the learners. The online version has suited school staff as they can fit the course in amongst their extremely busy working day. The flexibility that this affords means they can access the course without having to worry about taking four full days ‘out of the office.’”

Occupational Safety Adviser
City of Bradford Metropolitan Borough Council

REASONS TO CHOOSE ELEARNING

#1 Reduced costs



You can **SAVE UP TO 80%** in costs.

No travel costs, rooms, catering, materials, paper, reduced trainer fees and employee time away from the day job.

Source: Training magazine

#2 Retention

eLearning **INCREASES** retention rates by



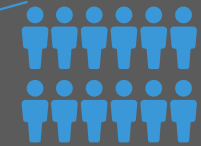
25-60%

as learners have more control over their learning process.

Source: Research Institute of America

#3 Scalable

eLearning can **EASILY BE SCALED UP**



to roll out to as many employees as you need, when you need.

#4 Environment

Open University's study found that eLearning courses consume an average of

90% less energy

and produce

85% fewer CO₂ emissions.



Source: Open University

#5 Reporting

Management can view **up-to-date analyses**



on how courses are performing and track the progress of individual employees in real-time

FREQUENTLY ASKED QUESTIONS

Can I run the IOSH Certified eLearning suite on our learning portal or LMS?

Yes, with our innovative new platform, you can now run IOSH Certified training via your own learning portal or LMS. Each of the IOSH Certified eLearning Programmes have been designed from the ground up to work on all the most popular SCORM-based LMSs – including Cornerstone, Totara, Kallidus, Moodle-based systems and more. The courses will sit in your learning portal or LMS alongside your other eLearning courses. They will have the same management functions so that you can enroll staff, track progress and monitor results.

How much time/resource needs to be assigned to get this course live?

Getting this course live couldn't be simpler and is as quick and easy as uploading the files to your current learning portal or learning management system. Your LMS Administrator will be familiar with the process, but our in-house technology specialists can support you to get the course live.

Will the course integrate seamlessly?

The course will appear alongside your other eLearning courses, in the same way your current eLearning content does. There is no difference in the learning experience, and the course can appear with your brand on it if you wish.

Is there a service level agreement (SLA) in place to support the SCORM Package?

Yes, the full SLA document is provided to all live clients.

Can I report on all my learners with one system?

Yes, learner progress will be tracked through your own system and reported on the same reports you use for your current eLearning.

Do learners have access to online tutors if they need help?

Yes, the course contains a live chat module which connects directly to the course support team 09:00-17:00 Monday to Friday (UK time). Outside of these times, learners can send offline messages that our course support team will pick up during online times.

Will I be able to enrol users myself?

Yes, this course will sit on your learning portal or learning management system, so you will be able to manage all enrolments, reports and completions as if it was your own course. No new logins, and no need to contact us when you want to enrol another user.

Is it a fixed price per learner?

Yes, depending on the number of learners you require training for, you will pay a fixed price per licence. There are no hidden costs.

How long do learners get access to the course for?

Learners have 90 days to access and complete their course, including passing an online assessment and submission of a separate project if applicable.

Is the final assessment marked by IOSH?

IOSH Managing Occupational Health and Wellbeing is made up of two parts – the first is an online multiple-choice assessment that is marked automatically, followed by a short project, which is marked by one of our expert IOSH tutors.

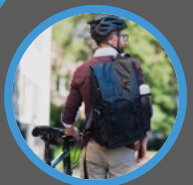
The marking process is moderated by IOSH through a programme of random sampling.

What happens if someone fails?

If a learner fails the multiple-choice assessment, they will automatically be given a second chance to take it online. If they fail the project, they will also get a second attempt after having received tutor feedback. If they fail their second attempt of the assessment or project, IOSH stipulates the course needs to be reset as the learner has not attained the level of knowledge required to pass.

When do learners get their certificates?

As soon as you have passed the assessment or assessments, you will be able to download an International Workplace certificate pending your IOSH certificate, which will be posted to you typically within 12 weeks.



ABOUT INTERNATIONAL WORKPLACE

International Workplace is a learning solutions provider, established in Cambridge in 1995. We work in partnership with renowned employers in the UK and internationally, using our expertise in the discipline of workplace management to help them manage their people and places.

A leader in learning technologies, we deliver expert digital content that promotes and fosters learner engagement, providing employers with data, insight and analysis to track and improve individual and corporate performance.

Our award-winning work has been recognised for its innovation, the value it adds to clients, and its focus on the learner experience.

Trust lies at the heart of what we do. Our content is authoritative and credentialed: we are a licensed training centre for IOSH (health and safety) and ILM (leadership and management). Our systems are robust and reliable: we are accredited to the ISO 27001 Information Security Management standard, and all our solutions conform with data and privacy best practice.

Ultimately, we believe in the power of people – our own colleagues, and the people we work for – encapsulated in our strapline: *It all starts with you.*[™]

CONTACT US


Tel: +44 (0)333 210 1995

International Workplace Ltd
The Old Granary
Westwick
Cambridge
CB24 3AR

sales@internationalworkplace.com

www.internationalworkplace.com

 @IntWorkplace

 [internationalworkplace](https://www.linkedin.com/company/internationalworkplace)

TRAINING



We have a curriculum of over 100 courses available via:

- virtual classroom
- classroom
- eLearning



Accredited courses from:

- IOSH
- NEBOSH
- International Workplace

GDPR COMPLIANCE & INFORMATION SECURITY

All our IOSH elearning programmes are fully GDPR Programme is fully GDPR compliant and has been designed from the ground up to work on all the most popular SCORM-based LMSs – including Cornerstone, Totara, Kallidus, Moodle-based systems and more.

International Workplace is an official IOSH licensed centre with ISO 27001 accreditation, so you have secure access to IOSH approved learning tools, accessible to managers and supervisors via your own LMS.



As a licensed IOSH training provider, International Workplace needs to store each learner's first name and surname, along with a valid email address. This personal data also assists in the Single Sign On (SSO) process and facilitates the necessary tracking of learner progress and performance. The SCORM package we provide can only access the data created by the learner.